

DEERFIELD SHORES
SUBD. M.B. 28 PG. 232

TEMPORARY SEEDING SPECIFICATIONS:

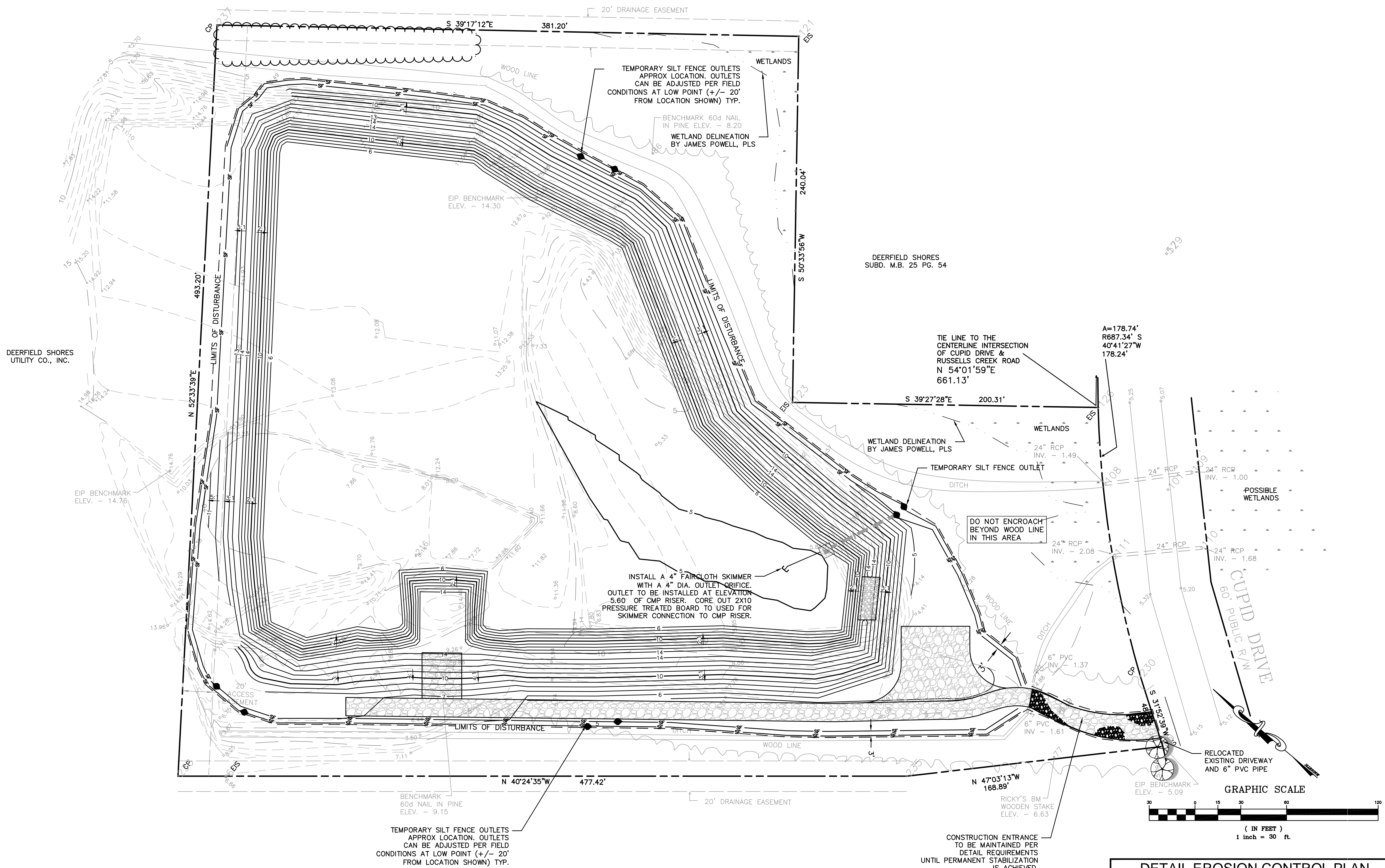
DATE	SPECIES	RATE
SEPT 30 - APRIL 1	WINTER RYE (GRAIN)	100 LBS/ACRE
APRIL 1 - SEPT 30	COMMON BERMUDA	50 LBS/ACRE
AUG 1 - OCT 25	GERMAN MILLET	100 LBS/ACRE

SOIL AMENDMENTS

LIME - 2000 LBS/ACRE OR FOLLOW RECOMMENDATIONS FROM A SOIL TEST.

FERTILIZER - 1000 LBS/ACRE 8-8-8 OR 10-10-10, OR FOLLOW RECOMMENDATIONS FROM A SOIL TEST.

MULCH - ALL SEEDED AREAS SHALL BE MULCHED USING SMALL GRAIN STRAW AT A RATE OF 2000 LBS/ACRE AND ANCHORED APPROPRIATELY.



DEERFIELD SHORES
UTILITY CO., INC.

DEERFIELD SHORES
SUBD. M.B. 25 PG. 54

Rev #	Revision	Date

Owner
MOREHEAD BEAUFORT YACHT CLUB/
CAROLINA MARLIN CLUB INC.
409 ISLAND DRIVE
BEAUFORT, NC 28516

**MOREHEAD BEAUFORT YACHT CLUB
SPOIL AREA IMPROVEMENTS**
BEAUFORT, NORTH CAROLINA

CONSTRUCTION DRAWINGS

Project No. C9034

421 FAYETTEVILLE STREET
SUITE 400
FAYETTEVILLE, NC 27801
P 919.380.8750
F 919.380.8752
FROM LICENSE NO. C-1051

STEWART

NORTH CAROLINA
PROFESSIONAL
SEAL
ENGINEER
HAMILTON
11/16/09

Project No.	C9034
Drawn By	IAM
Checked By	RAH
Issue Date:	10.01.09

**DETAIL EROSION CONTROL PLAN
(PHASE II)**

C502

DEERFIELD SHORES
SUBD. M.B. 17 PG. 24